



APPENDIX 2-4

**COMMUNITY CONSULTATION
REPORT**

Ireland
FuturEnergy



Cahermurphy West
Wind Farm



Community Engagement Report

Table of Contents

Introduction	4
Background	6
Project Resources	8
Community Engagement Summary	10
Table 1 - Occupied dwellings within 2km of the proposed final layout of 8 turbines	11
Community Engagement Timeline	12
Table 2 - Detailed breakdown of community engagement with the project's near neighbours and wider community for the proposed Cahermurphy West Wind Farm (June 2024 - Dec. 2025)	14
General engagement points to note	20
Table 3 - Local political representatives contacted during engagement	21
Table 4 - Local interest groups contacted during engagement	22
Table 5 - Website visits, virtual tour visits, local on-site clinic attendance	22
Table 6 - Media Report	23
Table 7 - The main issues raised during the course of engagement	25
Response to questions asked during engagement & influence of engagement on the evolution of the wind farm design	27
Impacts associated with health	27
Impacts associated with community benefit fund	27
Impacts associated with property prices	28
Impacts associated with traffic/transport/construction management	29
Impacts associated with potential shadow flicker	29
Impacts associated with noise and visual impact	30
Impacts associated with biodiversity and ecology	31
Impacts associated with tourism and recreation	31
Wind Energy Guidelines	31

Potential Long Term Benefits	32
Community Benefit Fund	32
How the fund works	33
Employment opportunities	34
Local county council rates	34
Ongoing Liaison and Contact	35
Post-planning submission until six months pre-construction	35
Pre-construction and construction phase	35
Operational phase	36
Decommissioning phase	36
Conclusion / Commitment	37
Appendix 1 Project Literature	38

Introduction

Cahermurphy Renewables DAC (the Developer), a joint venture between MCRE and FuturEnergy Ireland, is seeking planning permission from An Coimisiún Pleanála to construct an 8-turbine wind farm on lands at Cahermurphy in West Co. Clare. A separate application will be submitted in tandem for the grid connection from the project site to Moneypoint Substation. The details of this have also been widely shared with the public throughout the community engagement programme.

Cahermurphy II Wind Farm, remains under review by An Coimisiún Pleanála. While we believe Cahermurphy II, a 10-turbine submission, is a robust project, there is a risk that it may be refused planning.

To offset this risk, we are preparing another planning application for Cahermurphy West, based on the same site, with an 8-turbine layout. This redesign considers advances in technology, grid availability and a more efficient layout on the site.

If both wind farm proposals receive planning permission, Cahermurphy Renewables DAC can confirm that only one project will be constructed, as required by An Coimisiún Pleanála.

The Developer's active engagement with the local community began in June 2024 during the project design phase. The objective was to ensure the views and concerns of all members of the local community were considered to the extent possible, as part of the project design and the Environmental Impact Assessment process.

In the realm of renewable energy, wind farms stand as iconic symbols of sustainable progress, harnessing the power of nature to generate clean electricity. However, the journey from conception to operation of a wind farm is far from straightforward. One crucial aspect that significantly influences its evolution is stakeholder engagement. The Cahermurphy West team believes in involving local communities early in the design process, with a view to creating more inclusive, environmentally friendly and socially acceptable wind farms.

While it is not mandatory in Ireland to actively engage with communities prior to submitting a wind farm planning application, it is highly recommended under the Wind Energy Development Guidelines (Department of Environment, Heritage, and Local Government, 2006 and 2016).

The Draft Revised Wind Energy Guidelines (Department of Housing, Planning and Local Government, 2019) have retained this position.

At Cahermurphy Renewables DAC, we work hard to be good, long-standing neighbours and develop wind farm projects in a responsible and respectful manner so that local communities, as well as Ireland as a whole, can benefit. As a team, we value and respect honest, straightforward engagements.

This report outlines the community engagement programme undertaken by the Cahermurphy West Wind Farm project team prior to submitting this planning application. It also highlights the main issues raised during this process and how community feedback informed the final proposal, alongside the steps taken to ensure the proposed development will be of long-term economic benefit to the local community.



Background

Cahermurphy Renewables DAC is a joint venture between MCRE and FuturEnergy Ireland.

MCRE is a Co. Clare-based renewable energy development company, which has been working in West Clare since 2006. The ambition of MCRE is to play an active role in ensuring Co. Clare becomes a national leader in the production of clean, low carbon energy. The joint venture with FuturEnergy Ireland ensures a strong Co. Clare involvement in this exciting project, building on the success of Cahermurphy 1 Wind Farm.

FuturEnergy Ireland is a leading Irish wind developer established in 2021 as a stand-alone joint venture between Coillte and the ESB. The company was formed with an aim to maximise the potential of Ireland's unique wind and land resources and accelerate Ireland's transformation to a low carbon energy economy.

FuturEnergy Ireland is targeting the delivery of 1GW of renewable energy by 2030 through the development of high quality, carefully considered onshore wind and battery storage projects. This would power an estimated 730,000 homes annually and make a significant contribution to Ireland's commitment to produce 80% of electricity from renewable sources by the end of this decade.



View across Raheenleagh Wind Farm, Co. Wicklow

Our approach to community engagement

Proactive engagement.

We take a proactive approach to engagement, with dedicated Community Liaison Officers (CLOs) assigned to each project, which makes us accessible and easy to contact.

User-friendly, relevant and up-to-date information

We ensure that the local community is kept updated, informed and has access to project information, as soon as it is available, in a user-friendly format.

Constructive conversation

Open, honest engagement is key to our approach. We listen to feedback, seek to understand any concerns raised and address these to the extent possible during the pre-planning process. This engagement continues throughout the lifetime of the wind farm.

Building relationships

The project team is committed to strengthening partnerships with local communities now and into the future.

The key elements of our community engagement model are:

- Detailed and systematic engagement with all ‘near neighbours’ to the project (within 2km) from a very early stage of project design.
- Wider community outreach through online platforms, local print media advertisements, distribution of introductory brochure and detailed brochure out to 2km and via public community clinics.
- A commitment to open, transparent dialogue and communications.
- Creating opportunities for discussion on key issues via Community Liaison Officer door-to-door visits.
- Involvement of the local community at all stages of the project design process.
- Ensuring that the local community has access to all relevant information, as soon as it is available, in a user-friendly format.

We recognise that enabling meaningful engagement between the project team and local residents is imperative if we are to build a high-quality project that benefits everyone. This engagement must go beyond information provision. Thus our team placed the emphasis on honest two-way dialogue and the involvement of people in decisions that affect them.

Project Resources

In order to implement our community engagement programme, Cahermurphy Renewables DAC resourced the project with a dedicated engagement team from the outset. Community engagement on the Cahermurphy West project has involved the following key personnel:



Pádraig Howard

MCRE CEO

As CEO of MCRE, Co. Clare native Pádraig has extensive experience in all aspects of project management of construction projects, including the renewable energy developments Callan Wind Farm and Cahermurphy 1.



David Heelan

FuturEnergy Ireland Project Manager

David has worked in the renewables and industrial production sectors throughout Ireland and the UK since 2008 with a more recent focus on asset management and performance optimisation. He believes that our work will deliver tangible benefits to the Irish energy sector and directly reduce the country's reliance on imported and expensive fossil fuels.



Liam Cleary

Community Liaison Officer (CLO)

Liam spent more than 40 years in the forest industry with both the Forest Service and Coillte. During his time as District Manager for Waterford and South Tipperary, he was heavily involved in public consultation and community engagement on forest management plans and operations.



Kevin Donnellan

Community Liaison Officer (CLO)

Kevin has 43 years' experience in forestry management. Highlights include working on Coillte's dual FSC/PEFC certification, on biodiversity programmes and on the EU Life-funded blanket bog habitat restoration project. Kevin has a keen interest in forest recreation and building strong relationships with local communities.



Niall Barrett

Community Engagement Manager

Niall has a background in community and youth work. Most recently, he worked as a Community Liaison Officer on power transmission projects. Having previously developed education programmes on sustainability, Niall is now bringing his expertise in the non-profit sector to renewable energy.



Janine Thomas

Communications and Media Manager

Janine looks after communications and media relations at FuturEnergy Ireland. She worked as a journalist for various national newspapers for over 15 years before joining the team. Janine brings her extensive media and communications experience to this project.



MKO Planning and Environmental consultancy

MKO has prepared the planning application and Environmental Impact Assessment Report (EIAR) on behalf of Cahermurphy Renewables DAC. MKO is Ireland's largest planning and environmental consultancy. A team of more than 200 experienced professionals work across the planning, environmental, ecology and related fields.

MKO delivers challenging and complex projects for their clients and has an unrivalled track record of success. This success and growth rests entirely on the knowledge, skills, ambition and integrity of their people. MKO has been the lead consultant in securing planning permission, including the completion of EIARs and Natura Impact Statement (NIS) assessments, for approximately 1 GW of renewable energy projects to date.

Summary of Community Engagement

The Cahermurphy West project team focused on a consistent and open engagement approach with a personal touch. In accordance with the Code of Practice for Wind Energy Development Guidelines, we recognise the importance of appointing a Community Engagement Officer (CLO). However, to ensure good coverage of the area, the Developer chose to appoint two experienced CLOs to this project. Liam Cleary and Kevin Donnellan were appointed prior to the official project launch in June 2024. Both had knowledge of the area having worked on the previous design iteration of Cahermurphy 2, and are experienced in community engagement from their previous employment in Coillte CGA. Most importantly, both have a friendly and respectful disposition and were available to respond to calls within 24 hours.

The role of CLOs is to communicate key project information, timelines, updates, activities and benefits as the project moves through the design process. This was achieved through systematic door-to-door visits within the 2km zone, coinciding with both the project launch in June 2024, and the completion of the EIAR process as it was published (See Table 2) in August 2025.

This programme of community engagement differed from any other delivered by the project team, given the planning application submitted for the Cahermurphy 2 project on the same site. The project team had previously engaged with the majority of homeowners within the 2km radius of the site. The face-to-face interactions and conversations with local stakeholders allowed for a trusted and respectful relationship to gradually build.

Ultimately, the CLOs were on hand to discuss any queries raised by residents and relay those concerns to the project team. Every query submitted, whether by phone, text or email, was answered. Where a response required technical input, the CLOs acknowledged receipt and ensured it was addressed by the project manager or the relevant expert. On many occasions this led to follow-up meetings between the project team and the near neighbours as the project evolved through the design process.

The CLOs were readily available to take calls and meet with those living outside the 2km priority zone, including with community groups and local political representatives. This was communicated at every opportunity, especially during the delivery of the introductory brochure (Appendix 1), which was hand-delivered out to 2km at the project launch and was published along with all other project material on the website. This first brochure set out the project timeline and clearly stated what the community could expect from us.

The brochure confirmed that all project material published would be made available on the dedicated website <https://cahermurphywestwindfarm.ie/project-updates/>. This was supplemented by a Virtual Tour and two community clinic events. These will be discussed in more detail in the next section.

The team undertook a detailed mapping exercise at the early stages of the project to identify all relevant stakeholders including local residents, landowners, community groups, local political representatives and relevant local authority bodies. Those living within 2km of the site were prioritised on the basis that these stakeholders are most likely to be impacted by the project development. Within this area 140 dwellings were mapped, which included all properties inhabited, vacant and with the potential to be occupied (Table 1). Each property was given a unique identifier for the purpose of tracking our engagement that was stored within a secure stakeholder management software tool (Zoho).

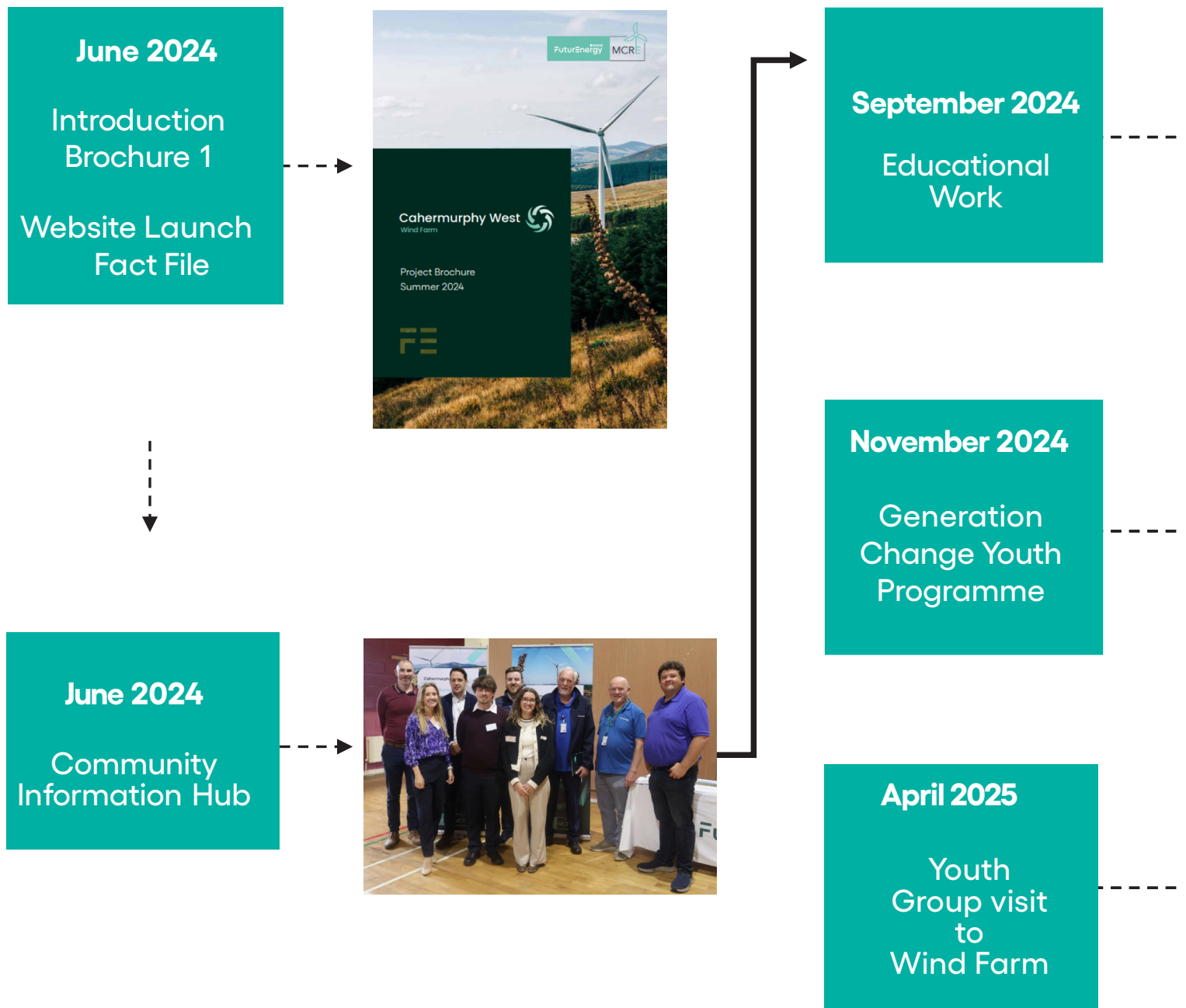
This defined 2km area was used as the basis for continuous engagement with the closest stakeholders and defined as the project’s “near neighbours”. The 2km prioritisation ensured that local stakeholders were notified first with all updates and communicated to in person, where possible. Note, 90% of all properties visited by the CLOs were occupied liveable dwellings. The remainder consisted of unoccupied derelict dwellings, an amenity centre and schools. The CLOs called to all occupied houses on two separate occasions as a minimum and met many of homeowners within 2km of the site.

Table 1 - Occupied dwellings within 2km of the proposed final layout of 8 turbines

Distance from Turbines	No. of dwellings
740m – 1km	25
1 - 2km	115
Total	140

Community Engagement Timeline

Infographic summary of community engagement carried out for the proposed Cahermurphy West Wind Farm (2024 - 2025).



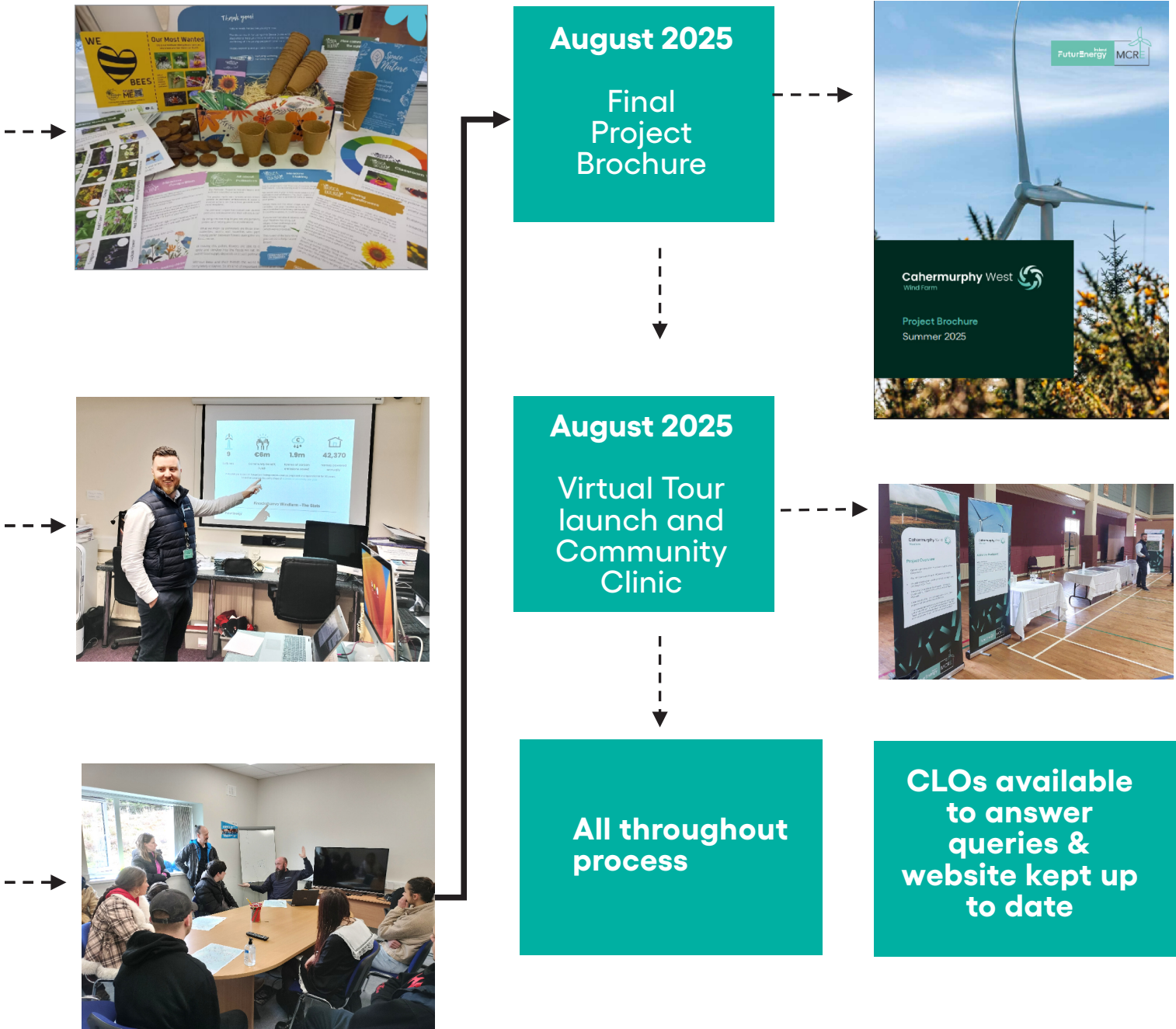


Plate 1. Summary of key elements of the Cahermurphy West community engagement with near neighbours and the wider community (2024 – 2025).

Table 2 - Detailed breakdown of Community Engagement with near neighbours and wider community for the proposed Cahermurphy West Wind Farm (June 2024 - Dec. 2025).

TIMELINE	ACTIVITY
January 2024	<p>Community Liaison Officers (CLOs) appointed to the project Kevin Donnellan and Liam Cleary were chosen as the CLOs for this project given their geographical proximity and knowledge of the local area.</p>
March/April	<p>Dwelling verification process carried out.</p> <p>The CLOs verify dwellings within 2km of the project site to designate houses as inhabited, vacant or derelict.</p>
June 2024	<p>Project launch An introductory brochure was distributed to all homes up to 2km from the site boundary by the CLOs. Deliveries of the 12-page brochure involved knocking on doors to engage residents in conversation. When no one was home, a contact note was left along with the newsletter inviting homeowners to get in touch. This brochure introduced FuturEnergy Ireland and MCRE, and the need for onshore wind, site suitability, a 'key milestones' timeline and a commitment from the Developer regarding what people could expect from us and when. The brochure also provided the rationale behind the redesign of the Cahermurphy 2 project. It also introduced key team members with photos and short biographies, and included contact details. Those who wished to be kept informed were encouraged to contact the CLOs and/or download the introductory brochure from the project website. See Appendix 1 for a copy of the brochure.</p> <p>The brochure was emailed to all local political representatives for East Clare one day before the maildrop. An open invitation to get in contact and meet with us was extended. The community groups identified in Table 3 were also provided with copies.</p> <p>The introductory brochure was accompanied by:</p> <ul style="list-style-type: none"> - The project website launch www.cahermurphywestwindfarm.ie - Detailed Frequently Asked Questions list (FAQ) - An invitation to attend the Cahermurphy West Information Hub held on June 27. <p>The project team replied to all queries and questions that arose from near neighbours and the wider community following completion of deliveries. The initial FAQ list was updated with questions that arose during this initial engagement.</p> <p>A project Information Hub was held in Kilmihil Community Centre on June 27, which is located 5km south of the proposed project area, from 6pm to 8pm. This location was chosen based on its size, facilities and proximity to project area commuter routes.</p> <p>The Information Hub was run as an open event, with community members invited to attend and discuss their queries face-to-face with the project team.</p> <p>Based on the number of attendees (32), we are satisfied that the venue was suitable and did not unduly preclude/prevent those with an interest in the project from attending. The location was well received. A few local homeowners could not attend due to other commitments. The team arranged separately to meet these individuals where requested.</p>

TIMELINE	ACTIVITY
<p>June 2024</p>	<p>Material on display included:</p> <ul style="list-style-type: none"> • 8 pull-up displays. • Rationale for the redesign of the Cahermurphy 2 project. • Large A1 size maps on location with respect to the developable area with a redline boundary. • Turbine layout map. • Community benefit fund. • Project benefits. • Project timelines. <p>Seven team members were on hand to answer questions and discuss matters of concern with attendees throughout the evening. One political representative from the community attended the event.</p> <p>Project team members present on the day included:</p> <ul style="list-style-type: none"> • David Heelan– FEI Project Manager. • Pdraig Howard – MCRE CEO. • Mary Lynch – FEI Portfolio Director. • Anne Walsh – FEI Community Engagement Manager. • Niall Barrett – FEI Community Engagement Manager. • Kevin Donnelan – Community Liaison Officer. • Liam Cleary – Community Liaison Officer.
<p>September to October 2024</p>	<p>Education Outreach</p> <p>The Community Liaison Officers contacted local schools to commence the education element of the community engagement programme. All schools near the project site accepted the team’s proposal to deliver workshops. The schools that engaged are as follows:</p> <ul style="list-style-type: none"> • Cahermurphy National School. • Kilmihil National School. • Mullagh National School. • Cree National School. • Kilmihil Secondary School. <p>The project team offered workshops, delivered by the CLOs and Niall Barrett, Community Engagement Manager, on Climate Change and Renewable Energy. Across the 5 schools approximately 180 pupils were engaged.</p>
<p>November 2024</p>	<p>Generation Change Programme – Ennis, Co. Clare</p> <p>Work was carried out to standardise the formal (schools) educational offering across FuturEnergy Ireland’s project areas, while also developing a programme template that could be tailored to meet the needs of young people engaging in non-formal, community-based educational organisations such as youth services, second chance education centres and disability organisations. Throughout the review process, FuturEnergy Ireland’s Senior Management Team were open to exploring innovative ways of engaging a wider cohort throughout all community engagement, giving full support to the new policy of inclusion through the Whole of Community approach to its educational activities.</p> <p>Generation Change consists of a three-week programme of interactive workshops that explore topics such as climate change, renewable energy</p>

TIMELINE	ACTIVITY
<p>November 2024</p>	<p>and youth advocacy</p> <p>FuturEnergy Ireland entered a partnership with Clare Youth Service to deliver a pilot programme in November 2024. Niall Barrett, Community Engagement Manager, directly delivered the programme to a group of 17 young people engaged with Clare Youth Service.</p> <p>Niall was employed as a youth worker earlier in his career. He took learnings, best practice methods of educational programme development and impact measurement into this overall process. The Generation Change programme is designed for young people in non-formal education, through youth work methods of engagement such as interactive workshops, discussion-focused sessions and encouraging young people to think critically about renewable energy to form their own opinions. Those who take part are encouraged to use their voice to advocate in favour of renewable energy infrastructure in their local area, through engagement with elected representatives and undertaking a local action project to raise awareness of developments with their peers.</p> <p>The group consisted of 17 young people from marginalised backgrounds including members of the Travelling Community, international protection applicants and early school leavers. FuturEnergy Ireland worked with them over three workshops to deliver the programme, which culminated in a visit to Galway Wind Park (with support from SSE Renewables) in March 2025. From the monitoring and evaluation of Generation Change participants, the following results were recorded:</p> <ul style="list-style-type: none"> • 88% believed renewable energy is a good thing, an increase from 63% previously. • 94% reported they were worried about the impact of climate change. • 72% believed they had the ability to take action to tackle climate change, up from 46%. • 65% planned to work on an environmental project in the future. • 100% were excited to visit a wind farm. <p>The feedback from Clare Youth Service was overwhelmingly positive, with FuturEnergy Ireland being invited back to run another three-week programme.</p>
<p>December 2024</p>	<p>Sponsored education for local schools, Bosca Dúlra and team-led workshops</p> <p>The developer partnered with Biodiversity in Schools to sponsor Bosca Dúlra educational resources. These resource boxes included native plant seeds, corresponding information packs, biodegradable planter pots, nature flash cards and posters.</p> <p>The resource boxes were hand-delivered to four schools in the local area by the CLOs:</p> <ul style="list-style-type: none"> • Cahermurphy National School – 2 boxes. • Kilmihil National School – 2 boxes. • Cree National School – 2 boxes.

TIMELINE	ACTIVITY
January to February 2025	<p>Ongoing Community Engagement</p> <p>Back-and-forth direct engagement between CLOs and members of the local community.</p>
March 2025	<p>Clare Youth Service – Galway Wind Park Visit</p> <p>On March 24, FuturEnergy arranged for the Generation Change group to visit Galway Wind Park. For all 17 young people involved, this was their first opportunity to see any renewable energy infrastructure up close. FuturEnergy supported Clare Youth Service to pay for coach transport.</p> <p>The group visited the operations centre of the wind farm and were hosted by staff from SSE Renewables. The group received a presentation on the construction and operation of Galway Wind Park, as well as a health and safety briefing. Following this, the group walked up to the highest point and observed a wind turbine in operation and being curtailed.</p> <p>Overall, the group provided positive feedback from the day, and Clare Youth Service expressed their interest in making a wind farm visit an annual event for their groups.</p>
April to May 2025	<p>Ongoing Community Engagement</p> <p>Back-and-forth direct engagement between CLOs and members of the local community.</p>
June 2025	<p>Sponsored education for local schools, Bosca Dúlra – Spring/Summer Boxes</p> <p>In June 2025, a second run of 20 Bosca Dúlra resource packs were delivered by the CLOs to local schools. These resource boxes included native plant seeds, corresponding information packs, biodegradable planter pots, nature flash cards and posters.</p> <p>The following schools received resource boxes:</p> <ul style="list-style-type: none"> • Cahermurphy National School - 2 boxes • Kilmihil National School – 2 boxes • Mullagh National School – 1 box • Cree National School - 2 boxes
August 2025	<p>Final Project Brochure, Virtual Tour and Community Clinic</p> <p>The CLOs delivers a detailed Project Brochure in mid-August to all households within 2km. This brochure ensured the community was aware of progress, and publicised the planned Community Engagement Clinic.</p> <p>This 36-page brochure shared information about the project, including the wind farm design process and extracts from the Environmental Impact Assessment Report. There was also a final turbine layout map. See Appendix 1 for a copy the brochure.</p> <p>The brochure was accompanied by:</p> <ul style="list-style-type: none"> • An invitation emailed to local political representatives to attend the community clinic. • A press release issued to local media. • Advertisement in local media publicising the Clinic.

TIMELINE	ACTIVITY
<p>August 2025</p>	<p>A cover letter accompanied the brochure, which invited community members to attend the Cahermurphy West Community Engagement Clinic on August 27, 2025. This event was open for the public to drop in at a time that suited them, between 1pm and 8pm.</p> <p>The project team continued to reply to all queries that arose during and after the brochure distribution.</p> <p>Publicity posters were placed in local shop windows advertising dates, times and locations for the Cahermurphy West community clinic.</p> <p>A Community Engagement Clinic was held in Kilmihil Community Centre, the same venue as the Information Hub in June 2024, which is located within 5km south of the proposed project area, from 2pm to 8pm. This location was based on positive experience of the information hub.</p> <p>This event was run on an open invitation, with community members given the opportunity to come and discuss their queries with the project manager and specialists. A steady flow came in throughout the day with the evening hours being the busiest.</p> <p>Based on the numbers that attended (29), we are satisfied that the venue was suitable and did not unduly preclude/prevent those with an interest in the project from attending. The location was well received. A few local homeowners could not attend due to other commitments. The team arranged separately to meet these individuals where requested.</p> <p>Material on display at the clinics included:</p> <ul style="list-style-type: none"> • 8 pull-up displays • Large A1 size maps on location with respect the developable area, geology and hydrology and other EIAR related maps. • Turbine layout map • Grid route map • Turbine delivery route map • Community benefit fund • Project timelines • Photomontages from varying locations around the site (near and far) <p>Eleven team members were on hand to answer questions and discuss matters of concern with attendees. One local political representative attended the event.</p> <p>Project team members present on the day included:</p> <ul style="list-style-type: none"> • David Heelan – FEI Project Manager. • Pdraig Howard – MCRE CEO • Sinead O’Malley – FEI Development Director. • Janine Thomas – FEI Communications and Media Manager. • Niall Barrett – FEI Community Engagement Manager. • Kevin Donnellan – Community Liaison Officer. • Liam Cleary – Community Liaison Officer. • Eoin McCarthy – MKO Project Director. • Natalia Storlarska – MKO Project Consultant • Michael Cahill – MKO Project Consultant • William Shorthall – FEI Land Negotiator. <p>The Virtual Exhibition was launched the same day as the community clinic through the project website. It provides a project overview, timeframes, team biographies, site maps and details of archaeology & cultural heritage, ecology, noise, landscape & visuals, a full set of photomontages, community benefit fund information and an e-copy of the 36-page detailed project brochure. The Cahermurphy West Wind Farm Virtual Tour can be accessed via the project website homepage. See also Table 4 which summarises the visitor numbers being a total of 36 users through 70 engaged sessions.</p>

TIMELINE	ACTIVITY
September to November 2025	<p>Ongoing Community Engagement</p> <p>Back-and-forth direct engagement between CLOs and members of the local community.</p>
December 2025	<p>Sponsored education for local schools, Bosca Dúlra – Winter Boxes</p> <p>The CLOs delivered a third run of 15 Bosca Dúlra resource packs to local schools. These resource boxes included native plant seeds, corresponding information packs, biodegradable planter pots, nature flash cards and posters.</p> <p>The schools involved were:</p> <ul style="list-style-type: none"> • Cahermurphy National School - 2 boxes • Kilmihil National School – 2 boxes • Mullagh National School – 2 boxes • Cree National School - 2 boxes
January 2026	<p>Advertisements will be placed in a regional and national newspaper, informing the public of a ‘notice to submit’ a planning application and grid connection application for the project. Please refer to Table 3 - Media Report for details.</p> <p>Site Notices will be placed around the proposed project site and along the grid connection route.</p> <p>A letter will be distributed to the 2km priority area advising of the intended submission date.</p>
Planning application submission	<p>Two planning applications will be submitted to An Coimisiún Pleanála, one for the wind farm and the other for the grid connection. The EIAR will be available for viewing at the offices of An Coimisiún Pleanála and Clare County Council. When the full suite of documentation for each application has been received by An Coimisiún Pleanála, it will be uploaded and available to the public to view at www.cahermurphywestplanning.ie and www.cahermurphywestgridplanning.ie</p>
Post-planning submission	<p>The CLOs will remain available as the key points of contact and answer any queries that may arise.</p>

General engagement points to note

- The project team has maintained a continuous log of all communications with stakeholders using the Zoho management software tool. All feedback in the form of questions, concerns, requests for information and general commentary have been logged by the CLOs. All queries were responded to as information became available and we are satisfied that there were no questions left unanswered.
- All published project material has been routinely uploaded onto the Cahermurphy West project website, including additional information requested by stakeholders as a result of door-to-door conversations. These can be found on the **Project Update page** of the project website. The project website will continue to be maintained and updated during the post planning stage as updates become available.
- An extensive Frequently Asked Question section on the project website has been maintained since the project was publicly launched. This provides detailed responses on a range of topics including noise, shadow flicker, health impacts and property price impact.
- CLO work included being available on Saturdays and evenings in an effort to meet residents unavailable during the weekdays.
- All Cahermurphy West project communications material included both CLOs' contact numbers, the project email and postal addresses.
- Fortunately, all Covid-19 restrictions ended in early 2022 and did not impact our face-to-face engagement. However, the CLOs remain alert and respectful to vulnerable residents or those who do not wish to have conversations on the doorstep. In such cases, and indeed where a homeowner may not be at home at the time of calling, contact details (phone, text, email and website) were always left in the post box.

Local interest groups and local elected representatives in Co. Clare

The project CLOs routinely contacted local interest groups from the wider community and local elected representatives in Co. Clare to keep them updated. Typically, this took the form of hand-delivering or emailing the latest project newsletter. A list of the key community groups is outlined in Table 4.

In the case of local political representatives (see Table 3 below), all newsletters and brochures were emailed, and hard copies posted after the 2km near neighbours had received their copies. In addition, political representatives were invited on each occasion to get in touch if they had any queries or concerns.

Table 3 - Local political representatives contacted during engagement

Elected TDs/Councillors	Party	Engagement
Cathal Crowe, TD	Fianna Fáil	Attended Information Hub
Joe Carey, TD	Fine Gael	Did not engage
Michael McNamara, TD/MEP	Independent	Did not engage
Violet-Anne Wynne, TD	Independent	Acknowledged receipt of brochure. Did not engage
Timmy Dooley, TD	Fianna Fáil	Acknowledged meeting request. Did not engage
Donna McGettigan, TD	Sinn Féin	Did not engage
Joe Cooney, TD	Fine Gael	Attended Community Clinic
Cllr. Dinny Gould	Independent	Attended Information Hub and engaged with CLOs throughout
Cllr. Ian Lynch	Independent	Did not engage
Cllr. Rita McInerney	Labour	Attended Information Hub and Community Clinic
Cllr Pat Burke	Fine Gael	Did not engage
Cllr Pat Hayes	Fianna Fáil	Did not engage
Cllr Tony O' Brien	Fianna Fáil	Did not engage
Cllr Alan O'Callaghan	Fianna Fáil	Did not engage
Cllr. Gabriel Keating	Fine Gael	Did not engage
Cllr. Michael Shannon	Fianna Fail	Attended Information Hub and Community Clinic

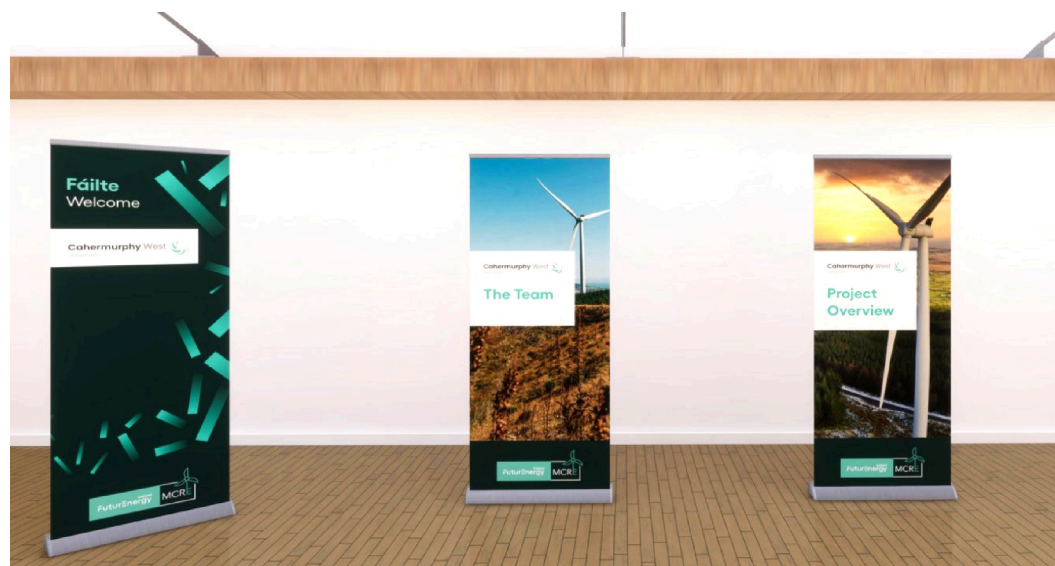


Table 4 - Local interest groups contacted during engagement

Group/Enterprise	Location	Description
Cahermurphy Sustainable Energy company	Cahermurphy	Fostering Community sustainable energy goals
Kilmihil Tidy Towns	Kilmihil	Enhancing community involvement to make a positive impact
Kilmihil Active Retired group	Kilmihil	Social connections for retired
Kilmihil GAA club	Kilmihil	Promotion Gaelic Games
Kilmihil Community Development Ltd	Kilmihil	Promotion of cultural & social life of the parish
Kilmurray Ibrickane GAA club	Mullagh, Quilty & Coore	Promotion of Gaelic Games
Kilmihil Athletic Club	Kilmihil	Promoting athletics
Mullagh Youth Club	Mullagh	Empowering young people to make a positive impact
Kilmihil Soccer Club	Kilmihil	Promoting soccer in the community
Cree Pre School	Cree	Social development of young children
Cllr Alan O'Callaghan	Kilmihil	Promotion of cultural and social events

Table 5 - Website visits, virtual tour visits, local on-site clinic attendance

Summary of	Numbers
Project website www.cahermurphywestwindfarm.ie	2,106 views
Virtual Exhibition hits (Aug 2025 – Dec 3 rd 2025)	36 active users 70 engaged sessions 1.48 mins average time spent
Information Hub (June 27 th 2024)	32
Community clinic attendance: (Aug 27 th 2025)	29

Table 6 - Media Report

Date	Topic	Media Type	Purpose
August 18 2025	Advertisement	Print media	To advertise the community clinics to a wide audience. Advert published in the Clare Echo and the Clare Champion. See Appendix 1.
August 18 2025	Press Release	Distributed to local print, online and radio media contacts	To advertise the project and its latest community engagement in the form of a virtual tour, brochure and community clinic. The press release ran in the Clare Echo and Clare Champion. See Appendix 1.





Table 7 – A summary of the main issues raised during the course of engagement

Topics	Issues raised
Health Impacts	Concerns expressed around the potential for health impacts on local residents. How can the developer mitigate or reassure people?
Community Benefit Fund	What is the legal basis for the fund? How will it be governed? Who can be part of the Fund Committee? What type of activities will it support?
Property Prices	How will the wind farm affect property prices in the area and what will the developer do to mitigate against decreases in value?
Traffic/Transport/ Construction Management	How will traffic disruption be managed during construction to and from the site and how would issues be resolved?
Shadow flicker	How can the developer ensure that shadow flicker won't occur?
Visual impact	Concerns expressed in relation to the negative impact on residential properties which may have direct views from windows looking towards turbines. A number of requests for photomontages to be taken at individual properties. Concerns also expressed in relation to the height of the turbines.
Noise	How much noise will the wind farm create? How will the project be cumulatively assessed in terms of noise considering the other wind farms planned in the area? How will the developer ensure that the wind farm will not breach noise limits/ impact upon residential amenity?
Biodiversity & Ecology	What steps is the developer taking to ensure protection of existing wildlife in the area, specifically for hen harrier populations?
Amenity & Recreation	Cllr. Shannon, Dinny Gould and Rita McInerney Can the developer look into the feasibility of an amenity element of the project to encourage tourism to West Clare. Questions were also raised regarding the use of the Community Benefit Fund for feasibility study for a recreational attraction for lake outside Kilmihil.
Wind Energy Guidelines	A number of residents were concerned about the setback distances and highlighted the need for the Wind Energy Development Guidelines (2006) to be updated and published. It was explained that this project was designed to meet the requirements of the Draft WEGs introduced in 2019.

Table 6 summaries the main issues raised as collated by the CLOs during conversations. All these topics are also addressed in detail within the EIAR.

Many of the concerns were initially brought up during the door-to-door newsletter deliveries and via subsequent phone calls and email correspondence. In-person conversations proved to be the most productive in terms of gathering and understanding the concerns, and for our CLOs being able to respond with accurate, factual responses. In many cases, the CLOs were able to alleviate concerns, but occasionally an in-depth technical response was required and therefore referred to the project manager. Overall, the experience of engaging homeowners in conversations has been positive and has given the team a full appreciation of what matters most to the neighbours closest to the project and indeed, to the wider community.

As outlined in Table 2, a list of frequently asked questions was included on the project website from the project launch (see FAQ list). Based on the Developer's own experience, questions relating to those in Table 6 (above) are common. Our approach is to provide the answers (including peer-reviewed references) from the start, keep these updated and add new questions and answers as they arise.

There were several meetings with local homeowners attended by the CLOs. The project team acknowledges that not everyone was satisfied with the answers provided nor pleased about hosting the potential project in their locality. However, we responded to the best of our ability and continue to endeavour to build relationships until such time as a final planning decision has been made.

While it is not always possible to satisfy the preferences of every community member on engagement matters, it is important to point out that there are many members of the community who welcome the wind farm, have found the engagement programme to be extensive and were appreciative of our efforts to respond to queries and have our CLOs available. The CLOs were treated with respect and in many instances have established trusted working relationships with near neighbours. The long timeframe for this engagement (17 months) has allowed people to digest the information, discuss among themselves and reach out to the project team on any items that they felt needed further clarification.

Response to questions asked during engagement & influence of engagement on the evolution of the wind farm design

As outlined in the previous section, the main areas of concerns for local residents include impacts relating to health, community benefit fund, property price impacts, traffic disruption relating to construction, shadow flicker, potential turbine noise, visual impacts, biodiversity/ecology, amenity and recreation.

Impacts associated with health

A review of the literature relating to health effects associated with wind turbine noise finds no evidence of any significant health effects associated with low frequency noise or infrasound. The project team posted a detailed Frequently Asked Question on this topic and can be viewed under the Fact File on the project website.

There is no evidence to support an increased likelihood of significant health issues associated with noise sensitive medical conditions. Meetings with individuals with specific medical concerns were held by the CLOs during their door-to-door visits and during the community clinic with the project manager and portfolio director.

Further details can be found in the EIAR.

Information about the community benefit fund

The CLOs were asked about the structure and administration of the proposed community benefit fund. The project team posted a detailed Frequently Asked Question on this topic that can be viewed under the Fact File on the project website.

The Cahermurphy West Wind Farm Benefit Fund will be designed and established based on the 'Rulebook for Community Benefit Funds under RESS as published by the Department of Environment, Climate and Communication in May 2025. The Renewable Electricity Support Scheme (RESS) is a policy initiative to deliver on the Government's Climate Action Plan and has specific requirements in relation to providing local support for those living close to wind farm developments.

An important feature of RESS is that all projects must establish a Community Benefit Fund to be used for the wider environmental, social and economic wellbeing of the local community. It is accepted that those living in closest proximity to the project should be priority beneficiaries and that is why some of the fund is designated for Near Neighbour payments. However, it is important that broader community benefits apply as well.

Regardless of route to market, the developer commits to following RESS guidelines for any future community benefit fund for this project.

See more on the community benefit fund in "**Potential Enduring Benefits**".

Impacts associated with property prices

Concerns were raised about potential impacts on the value of properties surrounding the site area. There are several wide-ranging international studies that consider potential effects of wind farms on nearby property values. Based on our review of available research papers we have not identified any peer-reviewed evidence in Ireland that indicates wind farms have a significant impact on property value. In other parts of the world, the vast majority of studies indicate that there is no evidence to support the claim that a wind farm has a negative long-term impact on local property prices.

Much of the research data emphasises the specific context of an individual wind farm, which makes engaging with local communities even more important. The specific location the quality of the community engagement programme and the level of net community gain in the form of a benefit fund and/or near neighbour scheme has been cited as important considerations. A detailed Frequently Asked Question (Q.7) on this topic can be viewed under the **Fact File** on the project website.



Impacts associated with traffic/transport/construction management

Concerns were raised about the potential disruption of traffic and construction in the area and the potential of damaging existing roads, properties adjacent to the roads and follow-up repairs not taking place.

The intention is that a liaison group will be established prior to the commencement of construction. Members of the project team will meet with this group monthly during the construction phase and monitor activities. The group will assist with developing plans for communicating effectively with those directly impacted by construction activity, especially traffic planning to minimise disruption.

The noise assessment considered all construction-related noise associated with machinery and traffic and all site activities and found that the proposed layout complies with all relevant regulations. In addition, during the pre-planning consultation process, Cahermurphy Development DAC made a commitment to local stakeholders to avoid using minor roads near the wind farm site entrance particularly during construction and maintenance. Further details can be found in the chapters of the EIAR.

Impacts associated with potential shadow flicker

Concerns were raised directly with the CLOs about the potential impact of shadow flicker from the turbines. The proposed layout can conform with the Wind Energy Development Guidelines 2006 of a maximum 30 minutes of shadow flicker per day or 30 hours per annum at any sensitive receptor through the management of turbine operations during periods when there is a potential for shadow flicker.

Further to this, in accordance with emerging best practice and the draft Wind Energy Development Guidelines 2019, the project is committed to elimination of shadow flicker, subject to safe shut down of the turbines, through the daily management of turbine operations. Frequently Asked Question No. 6 was posted on this topic and can be viewed under the Fact File on the project website. Further details are in the Shadow Flicker chapter of the EIAR.

Impacts associated with noise and visual impact

Noise and visual impacts were addressed as part of the layout design process. A decision was made early in the design process to ensure that a minimum distance of 740 metres would be maintained between nearest inhabited dwellings and turbines. This approach was guided by learnings from previous projects where it proved popular with near neighbours to increase the setback distances greater than the current recommended setback of 500m as set out in the Wind Energy Development Guidelines (WEGs) 2006.

The setback of 740m also complies with the Draft Wind Energy Development Guidelines (WEGs) 2019 which are not, as of the time of writing this report, official policy and may change in the final form. The Draft WEGs recommend a minimum setback of 4 times the tip height of proposed turbines to protect residential amenity.

Visual Impact

Various configurations and layouts were examined as part of the initial constraints-led design considerations. Following a series of design iterations, the proposed redesign is an 8-turbine layout. This was led by feedback from the project team, landowners, neighbours and the need to ensure sufficient separation distances are maintained for on-site constraints. In particular, a detailed visual impact assessment and ecological constraints dictated that an 8-turbine layout was deemed the most suitable, providing a balance between efficient use of the site area and minimising the visual impacts on the local and wider area as much as possible.

In the case of Cahermurphy West Wind Farm, designing an appropriate project layout was the main driver in the initial assessments from the Landscape and Visual consultant. Conversations with local residents on maximising setback distances from properties influenced the layout along with the environmental constraints of the site.

The photomontages prepared for the project are not intended to show the view from every dwelling but to be representative of local, regional and sensitive views in a wide area around the development site.

On the Cahermurphy West Wind Farm Virtual Tour an interactive photomontage viewer presents 30 viewpoints. Residents can judge the visual impact of the project from these selected locations. In addition, a hard copy booklet of all 15 photomontages were available at the on-site community clinic for attendees to discuss with the project team. This helped to alleviate concern around visual impact for many people who came to the clinic.

Noise

Potential noise emissions from the proposed development and the potential effects on local residents were an important consideration in the design of the turbine layout. The 8-turbine layout was subject to a detailed noise impact assessment and it was determined that the proposed layout will meet the noise requirements set out in the Wind Energy Development Guidelines (WEGs) 2006, current guidance and best practice. The noise assessment also involved working with community members to ascertain the background noise levels. To do this, noise monitors were placed at local residences surrounding the project study area during survey period.

At the community engagement clinic, the process of cumulatively assessing noise was explained along with the difference between 20-year-old turbines and modern wind turbines, 2006 WEGs, post-commissioning noise monitoring, adherence to the planning application and mitigation measures that can be used. According to feedback, these discussions were very informative and helpful to attendees.

The noise assessment considered all construction-related noise associated with machinery and traffic and all site activities and found that the proposed layout complies with all relevant regulations.

Please find further details in the EIAR.

Impacts associated with biodiversity and ecology

Concerns were raised about potential impacts on local ecology and habitats in the site area. Detailed site surveys and assessments were undertaken to consider potential impacts on all aspects of biodiversity including habitats, mammals, bats, birds, etc.

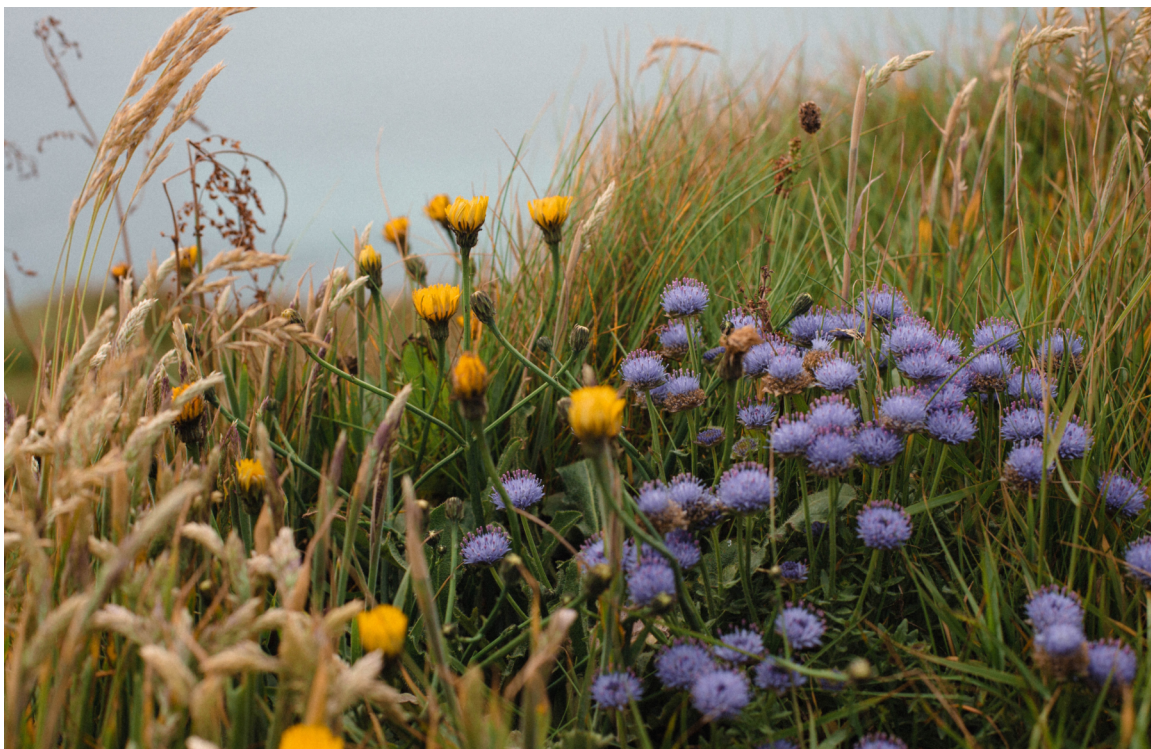
The initial survey findings informed the layout design such that potentially sensitive areas were avoided in the layout. More detailed surveys were undertaken following from the preliminary infrastructure layout designs and amendments were made to avoid sensitive areas, insofar as possible. Based on these assessments, it is considered that there will not be significant impacts on biodiversity in general and no further changes to the layout are required. The ecologist involved in the EIAR was present at the community engagement event to answer any related questions.

Impacts associated with amenity and recreation

Throughout the engagement process, a number of local residents and local elected representatives asked about the possibility of installing recreation facilities on the site, which would attract visitors and tourists as well as boosting local amenities to the community. Options were explored by the project team for this purpose throughout the design process, but due to limitations caused by land ownership in the area, it was not possible to develop an amenity and recreation plan for this project.

Wind Energy Guidelines

The issue of outdated Wind Energy Guidelines (WEGs) was raised a number of times, but in particular during the community clinic. It was explained throughout the engagement process that the Cahermurphy West wind farm was a redesign of the proposed Cahermurphy 2 wind farm project, and that this redesign met all requirements laid out in the 2019 Draft WEGs. In most cases when this subject came up, there was significant frustration that the new WEGs had not yet been released by the Government.



Potential Enduring Community Benefits

Cahermurphy West Wind Farm has the potential to bring significant positive benefit to the local community. The project will create sustainable local employment, it will contribute annual rates to the local authority and provide a local Community Benefit Fund in line with the new Renewable Electricity Support Scheme (RESS). A Community Benefit Fund will be put in place for the RESS period to provide direct funding to those areas surrounding the project.

Community Benefit Fund

There are two important government policy developments that will have a bearing on the establishment of future community benefit funds. The first is RESS, and its terms and conditions published by the Department of Environment, Climate and Communications. The second is the updated Wind Energy Development Guidelines, which have yet to be released. Both sets of policies specify government requirements on future community benefit funds for renewable energy projects. FuturEnergy Ireland confirms that these important policies will be fully adopted and integrated in our design and establishment of the Cahermurphy West Community Benefit Fund regardless of route to market.

Based on RESS, for each megawatt hour (MWh) of electricity produced by the wind farm, the project will contribute €2 into a community fund for the RESS period i.e. 15 years of operation. The Cahermurphy West Wind Farm, if constructed as proposed, means that the project could provide more than €294,000 per annum to the Community Benefit Fund for the first 15 years of its operational life. Therefore, over the expected lifetime of Cahermurphy West Wind Farm, the Community Benefit Fund will be in the order of €4 million.

These figures are indicative only and will be dependent on the generation capacity of the wind farm, which is influenced by a number of factors including:

1. Number of wind turbines.
2. Capacity and availability of energy production of those turbines.
3. Quantity of wind.

RESS guidelines for the annual distribution of this fund are as follows:

- A minimum of €1,000 shall be paid to each household located within a distance of a 1-kilometre radius from the nearest turbine.
- A minimum of 40% of the funds shall be paid to not-for-profit community enterprises whose primary focus or aim is the promotion of initiatives towards the delivery of the UN Sustainable Development Goals, in particular Goals 4, 7, 11 and 13, including education, energy efficiency, sustainable energy and climate action initiatives.

- A maximum of 10% on administration.
- The balance of the funds shall be spent on initiatives successful in the annual application process, as proposed by clubs and societies and similar not-for profit entities, and in respect of Onshore Wind RESS 1 Projects, on “near neighbour payments” for households located outside a distance of 1 kilometer, but within a distance of 2 kilometers from such RESS 1 Project.
- The area of benefit shall not extend beyond a radius of 25km from the RESS project.
- If an alternative route to market to RESS is sought by the developer, the developer commits to matching an equivalent Community Benefit Fund for a 15-year period.

How the fund works

The Government's 'Community Benefit Fund Good Practice Principles Rulebook' provides full details on how the fund is to be governed and requires local community participation in all decisions in regard to how the funding should be used. The fund is open to individuals, and not-for-profit groups such as community and voluntary groups, charities, social enterprises and clubs and societies. High quality administration, local where possible, is also a key expectation.

Should the project receive a positive planning outcome, the project team and the local community will work together to develop an appropriate local structure that would design the Cahermurphy Wind Farm Community Benefit Fund. This group will make decisions on funding allocations and, with the assistance of an administrator, manage the fund, ensuring transparency and good governance.



Employment Opportunities

It is estimated that the proposed project will create approximately 90 jobs during the construction phase and three to four long-term technical jobs during the operational and maintenance phases. During construction, additional employment will be created in the region through the supply of services and materials. There will also be income generated by local employment from the purchase of local services i.e., travel and lodgings.

Local County Council Rates

Should the project be constructed and operated as designed, annual rates will be paid to the local authorities of approximately €550,000 annually. This would make Cahermurphy West Wind Farm an important future contributor to county council funding. This could positively impact local infrastructure and amenities such as roads, public lighting, street cleaning, libraries, fire services and public amenities. on-site recreational amenities and employment.



Ongoing Liaison and Contact

The project phases detailed below outline the varying levels of engagement anticipated depending on the level of project activity. Underpinning the engagement will be a dedicated Community Liaison Officer who is contactable by email and phone. These details will remain on the project website, which will be in place for the duration of the project. As the Cahermurphy West Wind Farm progresses, regular updates will be posted to this website.

Post-planning submission until six months pre-construction

If the proposed project receives a favourable planning decision and progresses successfully through the next stages of development, there will be a period of 24 to 36 months when key community-related activities will begin. The first is a participatory design process for the Cahermurphy Community Benefit Fund (CBF) that will take place in the months preceding and during construction work.

The team will start reaching out to residents within the 2km zone as well as those living in the wider community, to bring together a small group who are interested in working on the design and structure of a community-based entity that would ultimately run the Community Benefit Fund. This process will start with a scoping exercise followed by a series of facilitated workshops. It is hoped that representatives involved in existing local development initiatives will become stakeholders and therefore contribute to this strategy.

Pre-Construction and Construction phase

Six months prior to construction, we will initiate the formation of a liaison group with the CLOs acting as the key point of contact. The project team will meet this group monthly to prepare for the construction phase and monitor activity during construction. This group will develop plans for communicating effectively with residents directly impacted by construction activity and deliveries, especially traffic planning to minimise disruption.

The project will also engage with local suppliers to outline its future needs and promote the use of local suppliers and service providers wherever possible. This may take the form of a “meet the buyer” event.



Operational Phase

The project will move forward with a proposed annual meeting with the liaison group to update them on the project's performance and address any issues. Once again, the CLOs will be available throughout this period to directly address any issues raised by local residents. The project website will also be maintained as a means of providing regular, up-to-date information. There will be regular updates on the performance of the Community Benefit Fund and regular calls for funding proposals.

Decommissioning Phase

A year prior to decommissioning, the project team will engage with the established liaison group as well as all residents within the 2km zone to outline the decommissioning plan and address any issues.

In line with the Government's Renewable Energy Support Scheme and the Code of Practice 2016, the project will publish an annual report of all engagement activities on the project website.

Conclusion / Commitment

In conclusion, this report illustrates that there has been very active and extensive community engagement in the vicinity of the proposed Cahermurphy West Wind Farm project throughout the planning/design phase.

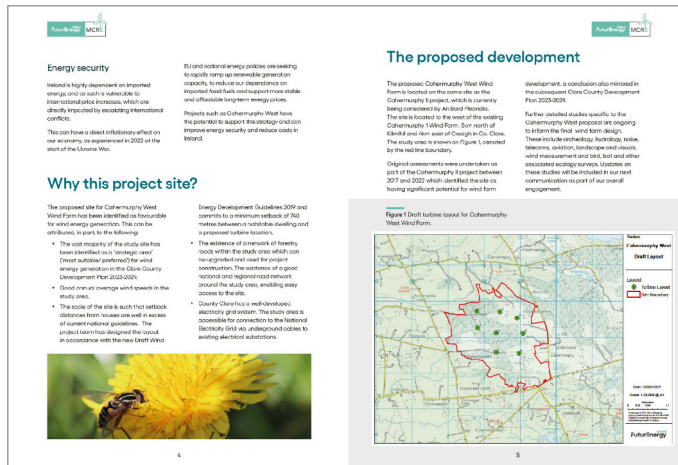
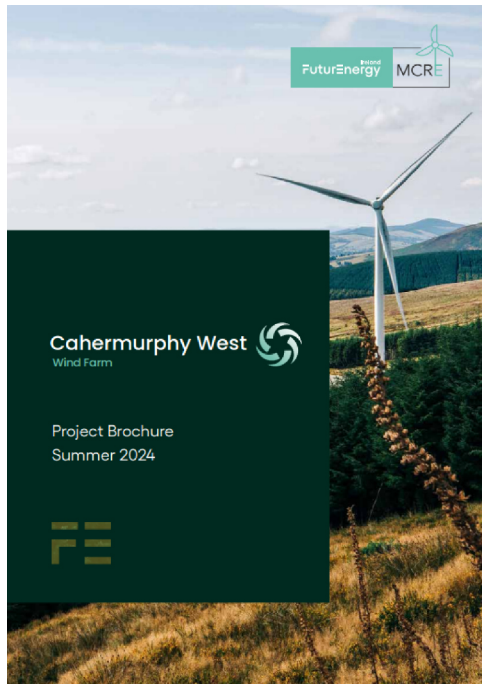
Our project team have worked hard to ensure that information has been made available to the local community on a transparent basis, that all concerns and questions raised have been addressed to the extent practically possible and that the community engagement work on this project has been extensive and carried out to the highest standards. To this end, we are satisfied that we have achieved and surpassed these objectives.



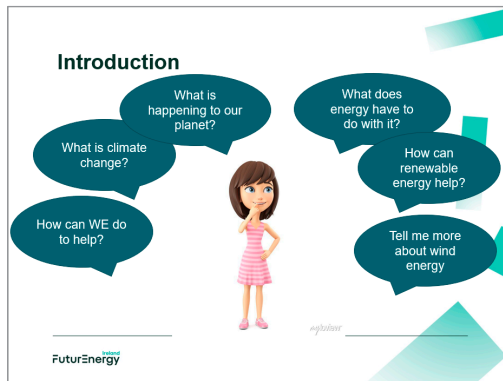
APPENDIX 1: Project Literature

All Project newsletters, brochure, webinar information and other information are accessible from the project website at <http://www.cahermurphywestwindfarm.ie>

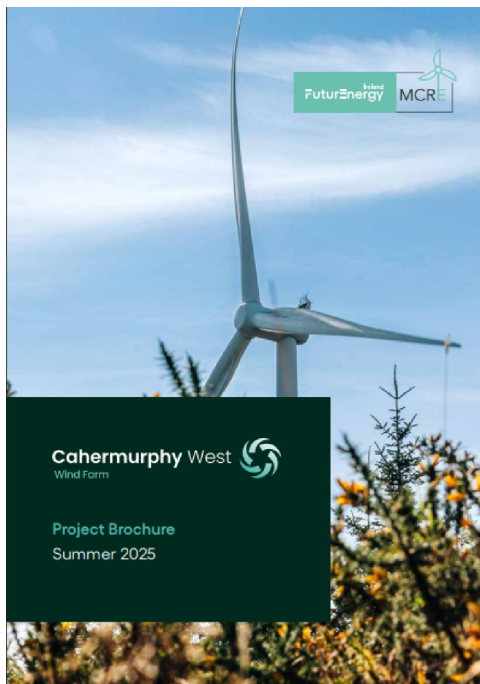
June 2024 Brochure 1:



Sponsored Education Programme (National Schools): Biodiversity in Schools: Bosca Dúlra



August 2025 Detailed Project Brochure 2:



Introduction

The proposed Cahermurphy West Wind Farm is located 5km north of Keshil and 4km east of Ough in west Co. Donegal.

The wind farm is being developed by Cahermurphy Wind DAC, a joint venture between Mid-Clare Renewables Limited (MCRE) and FuturaEnergy Ireland.

An earlier design version, Cahermurphy 1 Wind Farm, received approval from An Comhairle Pleanála. While we believe Cahermurphy is a fit-for-purpose submission, as a robust project, there is a risk that it may be refused planning.

To offset this risk, we are preparing another planning application for Cahermurphy West, based on this same site, with an 8-turbine layout. This energy contains advances in technology, grid availability and a more robust focus on the site.

If both wind farm proposals receive planning permission, the joint venture company, Cahermurphy Renewables DAC, can confirm that only one project will be constructed, as required by An Comhairle Pleanála.

About the Developers

Cahermurphy Renewables DAC is a joint venture between MCRE and FuturaEnergy Ireland.

MCRE is a Co. Clare based renewable energy development company, which has been working in West-Clare since 2006. The ambition of MCRE is to play an active role in ensuring Co. Clare becomes a national leader in the production of clean, low carbon energy.

The joint venture with FuturaEnergy Ireland ensures a strong Co. Clare involvement in this exciting project, building on the success of Cahermurphy 1 Wind Farm.

FuturaEnergy Ireland is a leading Irish wind developer established in 2001 as a stand-alone joint venture between Celix and the ESB. The company was formed with a view to maximise the potential of Ireland's unique wind and land resources and accelerate Ireland's transformation to a low carbon energy economy.

FuturaEnergy Ireland is targeting the delivery of 10GW of renewable energy by 2030 through the development of high quality, carefully considered onshore wind and battery storage projects. This would power an estimated 750,000 homes annually and make a significant contribution to Ireland's commitment to produce 80% of electricity from renewable sources by the end of this decade.

The Project Team

The team directly involved in the proposed Cahermurphy West Wind Farm includes the Project Manager, David Healy from FuturaEnergy Ireland and Planning Advisor, Mairéad Healy from the local authority, Mayo County Council, as well as several specialist consultants, including the planning and environmental consultants, preparing the planning application and Environmental Impact Assessment Report (EIR) on behalf of MCRE and FuturaEnergy Ireland.

MCRE is Ireland's largest planning and environmental consultancy. A team of more than 200 experienced professionals work across the planning, environmental, ecology and related fields. MCRE delivers challenging and complex projects for their clients and has an unrivalled track record of success. MCRE has been the lead consultant in securing planning permission, including the completion of EIRs and Natura Impact Statement (NIS) assessments, for approximately 1,000 of renewable energy projects to date.

This brochure has been prepared to:

- describe the comprehensive design process, which explains how the wind farm layout has evolved;
- present the final scheme layout that will be submitted with the planning application;
- outline the many ways in which this project could bring positive benefit to the local area;
- introduce the topics that will be covered in the Environmental Impact Assessment Report;
- explain the planning system and how to engage with the process;
- provide details of the next steps for the project.

All information on the Cahermurphy West project to date, including a downloadable copy of the brochure, is available at www.cahermurphywestwindfarm.ie

The Context

Our planet is warming at a dangerous rate. The World Meteorological Organisation has confirmed that 2024 was the hottest year ever recorded globally, with temperatures surpassing 1.5C above pre-industrial levels. Greenhouse gases, ocean temperatures, sea levels and glaciers are reaching all-time highs. The report revealed that droughts, wildfires, floods and other extreme weather events caused food crises, economic upheaval, and displaced more than 100,000 people.

Earlier this year, we saw a wave to tame the devastating impacts of extreme weather events when Storm Eowyn brought widespread chaos across the country.

According to the Environmental Protection Agency, Ireland will fall far short of meeting its climate targets. The country is predicted to achieve only a reduction of 2% in greenhouse gas emissions by 2030, compared with the national target of 37%.

Urgent action is needed. A key pillar of this will be an increase in renewable energy to replace the oil, gas and coal that we burn to produce electricity.

Renewable energy generation is central to the Government's energy policy, which is

targeting 80% of electricity from renewable sources by 2030. The Government is committed to rapid decarbonisation of the energy sector and the goal is to achieve net zero emissions by 2050.

In 2024, Ireland's onshore wind energy capacity reached just over 5,000 MW. The Climate Action Plan (CAP) 2023 aims to increase onshore wind energy capacity to 10,000 MW by 2030.

The further development of renewable energy sources will also improve Ireland's energy security. Energy security is vulnerable to international price increases, which have been exacerbated by global events such as the conflict in Ukraine. This in turn has had an unprecedented inflationary effect across our economy.

EU-level national energy policies are seeking to rapidly ramp-up renewable generation capacity to reduce our dependence on imported fossil fuels and support more stable and affordable long-term energy prices.

Cahermurphy West Wind Farm is being progressed in part, as a response to these challenges.

In 2024, Ireland's onshore wind energy capacity reached just over 5,000 MW. The Climate Action Plan (CAP) 2023 aims to increase onshore wind energy capacity to 10,000 MW by 2030.

Why onshore wind?

As Ireland's largest and cheapest renewable electricity resource, wind energy accounted for 22% of electricity generation in Ireland in 2023. In total, wind energy produced 18.2B (gigawatt) hours (GWh) of electricity last year, which is equivalent to the electricity consumption of almost three million Irish families.

Onshore wind energy is a clean fuel source. Unlike power plants that burn fossil fuels, wind turbines do not produce atmospheric emissions that cause greenhouse gases. Wind is a free, inexhaustible natural resource, available in abundance in Ireland.

As an option to wind farm sites, onshore wind energy is a highly scalable and flexible energy source. It can be installed on many types of land, including agricultural land, and does not require large-scale land reclamation or biodiversity management.

Other renewable energy technologies such as offshore wind and solar are also required to meet national renewable energy targets. As well as increasing onshore wind capacity in Ireland, the Climate Action Plan calls for a 50% increase in solar and more than 1,000 of offshore renewable energy by 2030.

August 2025 Media Release

Media release: Community Clinic to take place in Kilmihil for Cahermurphy West Wind Farm

August 18, 2025

A Community Clinic will take place for Cahermurphy West Wind Farm as the project enters the final phase of public consultation. The proposed renewable energy site is located 5km north of Kilmihil and 4km east of Creagh in west Co. Clare.

The wind farm is being developed by Cahermurphy Renewables DAC, a joint venture between MCRE Windfarm Ltd and FuturEnergy Ireland. MCRE is a Co Clare-based renewable energy development company while FuturEnergy Ireland is a standalone joint venture between Coillte and ESB.

The Community Clinic will take place on Wednesday August 27, 2pm-8pm, in Kilmihil Community Centre, 4 Church Street, Kilmihil, Co. Clare, V15 A448. The clinic will give the local community an opportunity to access the most recent information, meet the team and discuss the project in detail.

Community Liaison Officers Kevin Donnellan and Liam Cleary recently delivered a final project brochure to homes within 2km of the proposed site. The Cahermurphy West brochure includes details of the design process, extracts from the Environmental Impact Assessment Report and a final layout map that shows eight turbines. The brochure is also available to view and download at www.cahermurphywestwindfarm.ie.

A Virtual Exhibition can also be accessed from the project website above from August 27. This online tour includes project information and photomontages that show what the proposed turbines will look like from different viewpoints.

The Cahermurphy West team has been engaging with the local community since the project launched in June 2024. The proposed Cahermurphy West Wind Farm is well positioned to support the local area through investment in the local economy, employment and community funding. Subject to planning consent, this project has the potential to produce more than 147,000 MWh of electricity a year and provide a Community Benefit Fund of an estimated €294,000 per annum for 15 years. In total, approximately €4 million would be contributed to the local area via community funds.

David Heelan, Project Manager for FuturEnergy Ireland, said: *"We all take electricity for granted. Consider a normal start to the day: you might switch on a light, take a shower, make a cup of tea and check your mobile phone, all before you go to work or school. However, only 32% of the electricity used last year was generated from renewable energy sources such as wind and solar."*

"The national target for producing electricity from renewables is 80% by 2030 and Cahermurphy West Wind Farm would help Ireland achieve this ambition. Eight turbines would generate enough clean electricity to power around 40,000 homes in Co. Clare annually."

"By supporting Ireland in phasing out expensive, imported fossil fuels, Cahermurphy West Wind Farm would help to combat climate change, strengthen our energy independence and improve security of supply."

Pádraig Howard, CEO of MCRE, said: *"We would like to see Co. Clare becoming a national leader in the production of green energy, building on its historical legacy of projects such as the Ardacrusha Shannon Hydroelectric Scheme of the 1920s. The Cahermurphy West project would provide a boost to the local economy, including €4 million in community benefit funding to support projects and initiatives, from sports clubs and educational scholarships to home retrofits and cycle paths, and many other positive local developments."*

"This project involves strong collaboration with more than 10 local landowners for whom Cahermurphy West represents a sustainable and viable source of income to support their farms for the next generation."

"The county and regional benefits of this project include a significant boost in the attraction of investment and the creation of jobs from Foreign Direct investment (FDI) and indigenous firms alike. The availability of low carbon, clean energy is seen as a key driver of investment, new jobs and growth, which would be very welcome in West Clare and throughout the region."

Cahermurphy Renewables DAC intends to make a planning application for the wind farm to An Coimisiún Pleanála in Q4 2025.

All information is available at www.cahermurphywestwindfarm.ie. If you have any queries, please email cahermurphywest@futureenergyireland.ie, or contact Kevin Donnellan on 087 431 5976 or Liam Cleary on 087 967 1981

Editor's Notes

About FuturEnergy Ireland

FuturEnergy Ireland is a leading Irish wind developer established in 2021 as a stand-alone joint venture between Coillte and the ESB. The company was formed with an aim to maximise the potential of Ireland's unique wind and land resources and accelerate Ireland's transformation to a low carbon energy economy.

FuturEnergy Ireland is targeting the development of 1GW of renewable energy by 2030 through the development of high quality, carefully considered onshore wind and battery storage projects. These projects would power an estimated 730,000 homes annually, make a significant contribution to Ireland's commitment to produce 80% of electricity from renewable sources by the end of this decade, and deliver material emissions reductions. www.futureenergyireland.ie

About MCRE

MCRE is a Co. Clare-based renewable energy development company, which has been working in West Clare since 2006. The ambition of MCRE is to play an active role in ensuring Co. Clare becomes a national leader in the production of clean, low carbon energy. The joint venture with FuturEnergy Ireland ensures a strong Co. Clare involvement in this exciting project, building on the success of Cahermurphy 1 Wind Farm.

Press queries

For press queries, please contact Janine Thomas, Communications and Media Manager at FuturEnergy Ireland, on Janine.thomas@futureenergyireland.ie

Advert for the community clinic

Cahermurphy West
Wind Farm

COMMUNITY CLINIC

Cahermurphy West Wind Farm is a proposed renewable energy development in west Co. Clare. This project is a co-development between MCRE Windfarm Ltd and FuturEnergy Ireland.

You are invited to a community clinic to meet the team, learn more about the project and ask your questions.

Wednesday 27th August, 2pm – 8pm
Kilmihil Community Centre,
4 Church Street, Kilmihil,
Co. Clare, V15 A448

Contact Us:
Email: cahermurphywest@futureenergyireland.ie
Call or text: Community Liaison Officers
Kevin Donnellan on 087 431 5976 or
Liam Cleary on 087 967 1981

We look forward to hearing from you

www.cahermurphywestwindfarm.ie

March 2024 Presentation to Transition Year secondary schools

FuturEnergy Ireland

Climate change, Energy & Your future

FE John Lyons, FuturEnergy Ireland

April 2025

Today's talk

- Climate Change
- Energy sources
- Some challenges
- Wind Energy
- Career Opportunities in the Wind Energy Sector

IF WE LOOK AFTER THE NATURAL WORLD THE NATURAL WORLD WILL LOOK AFTER US
David Attenborough

FuturEnergy Ireland © FuturEnergy Ireland 2023

January 2026:
'Notice to Submit' advertorial



Notice to Submit Planning Permission

January 2026

Dear Homeowner,

A Notice to Submit a planning application for the proposed Cahermurphy West Wind Farm will be published in the Clare Champion and the Irish Independent newspapers this week. A separate notice for the associated grid connection planning application will also be published in parallel. Planning notices will be erected around the project site for this development. The application will be submitted by Cahermurphy Renewables DAC.

When An Coimisiún Pleanála has received and validated both planning applications, the full suite of planning application documentation, including the Environmental Impact Assessment Report (EIAR), will be uploaded and available to view at www.cahermurphywestplanning.ie and www.cahermurphywestgridplanning.ie respectively, and at www.pleanala.ie. A hard copy of the planning application and EIAR will also be available at the offices of An Coimisiún Pleanála and Clare County Council.

There is a useful FAQ section on An Coimisiún Pleanála's website that provides guidance on public participation. Any person or body may make observations on the project after the applications have been submitted. The timeframe to make an observation is seven weeks. To give you an indication of timeline, on average it takes 12 to 18 months for a decision to be made on wind energy projects. We will keep you up to date with any further news.

Yours sincerely,

Cahermurphy West Project Team

Contact Us
Cahermurphywest@futureenergyireland.ie
Kevin Donnellan CLO: 087 431 5976
Liam Cleary CLO: 087 967 1981

Cahermurphy West 
Wind Farm



www.cahermurphywestwindfarm.ie